



POLITERM® BLOW READY MIX

FAN FOR POLITERM® BLU READY MIX LOADING
IN CEMENT MIXER

POLITERM BLOW READY MIX

Fan for Politerm® Blu Ready Mix loading in cement mixer

TYPE OF EQUIPMENT

Fan for the loading of Politerm® Blu Ready Mix into cement mixer

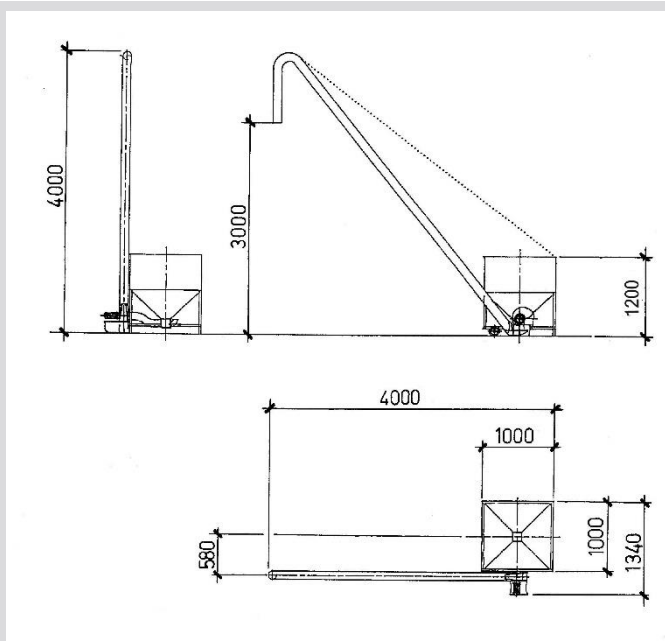
Iron framework with:

- Engine's control panel.
- Transfer fan of the beads.
- Metal pipe for the beads loading with flexible top part.
- Wheels for the handling.
- Adjusting device for the loading pipe positioning.
- Power supply cable + industrial three-phase 16 A plug.

TECHNICAL CHARACTERISTICS

CHARACTERISTIC	VALUE
Power supply	400V
Voltage	380V
Power	Standard: 0,55kW - Plus: 1,1kW
Weight	300kg
Hopper capacity	760lt

TECHNICAL SCHEMA



All the indications provided in this technical data sheet are purely approximate and are not binding for legal purposes. The data listed herein have been gathered from laboratory tests meaning that in practical applications on building sites the final characteristics of the product may be subject to substantial variations depending on the meteorological conditions and the installation. The user must always check the suitability of the product for its specific use, undertaking all liability implicit in and deriving from the use of the product, as well as comply with all methods and instructions for use generally referred to as "workmanlike" execution. TEKTO HELLAS S.A. reserves the right to change the contents of this technical data sheet on its final judgement without any notification. The distribution of this data sheet supersedes and cancels the validity of any other data sheet published previously.

ARCHITEKTONIDIS MONOTIKA S.A. "TEKTO HELLAS S.A"

Production – Distribution – Application of building insulation materials

Headquarters

10 Zakka str Neapoli, Thessaloniki,
Greece Tel: +302310511871
email: tekto@tekto.gr

Branch office

1-3 Zakka str Neapoli, Thessaloniki,
Greece Tel: +302310511871
email: tekto@tekto.gr

Production

10Km Thessalonikis-Neochoroudas,
Greece Tel: +302310782007
email: tekto@tekto.gr

